



# 29er World Championships

Kiel, Germany

2nd to 9th July 2026

**The Organising Authority is Kieler Yacht-Club in conjunction with  
the International 29er Class Association**

## NOTICE OF RACE

[NP] denotes a rule that shall not be grounds for protests by a boat. This changes RRS 60.1.

[DP] denotes a rule for which the penalty is at the discretion of the International Jury.

[SP] denotes a rule for which a standard penalty may be applied by the race committee without a hearing or a discretionary penalty applied by the International Jury with a hearing. This changes RRS A5.1

### 1. RULES

- 1.1 The event will be governed by the rules as defined in *The Racing Rules of Sailing*.
- 1.2 Other documents under RRS Definition 'rule' (g) include: the Event Media and Marketing Rules (EMMR), as published on the Kieler Yacht-Club website.
- 1.3 Penalties: In RRS 44.1 "Two-Turns Penalty" is changed to "One-Turn Penalty"
- 1.4 Appendix P, Special Procedures for Rule 42, applies, with RRS P2.1 to P2.3 deleted and replaced by:
  - P2.1 First and Second Penalty  
When a boat is penalized under rule P1.2 for the first or second time during the event, her penalty shall be a One-Turn Penalty under rule 44.2. If she fails to take the penalty she shall be disqualified without a hearing.
  - P2.2 Third and Subsequent Penalties



When a boat is penalized a third or subsequent time during the event, she shall promptly retire. If she fails to do so she shall be disqualified without a hearing and her score shall not be excluded.

- 1.5 The Class Rules will apply except for any that are altered by the Notice of Race. The Class Race Management Guidelines will also apply, but a failure to follow these Guidelines is not on its own grounds for redress. This changes RRS 61.4(b).

<https://29er.org/assets/29erMedia/29er%20RACE%20MANAGEMENT%20GUIDELINES%202024-2.pdf>

- 1.6 RRS Appendix T, Arbitration applies.

- 1.7 The National Authority Prescriptions of the German Sailing Federation apply and will be published on the official notice board.

## 2. SAILING INSTRUCTIONS

The Sailing Instructions will be available online at [www.29erworlds.org](http://www.29erworlds.org) at the latest five days before the event. No paper copies will be handed out.

## 3. COMMUNICATIONS

- 3.1 The official notice board is located online at [www.29erworlds.org](http://www.29erworlds.org)

- 3.2 Except in emergency a boat shall neither make nor receive radio transmissions, text messages or cellular phone calls while racing.

## 4. ELIGIBILITY AND ENTRY

- 4.1 All competitors shall be fully paid-up members of the International 29er Class Association.

- 4.2 Eligible boats shall enter through the event website [www.29erworlds.org](http://www.29erworlds.org) via OurClubAdmin.

- 4.3 Competitors shall be aged 13 years or older before 31st December 2026.

- 4.4 Russian and Belarusian nationals are not permitted to enter the Championship.

- 4.5 **Parent/Guardian Declarations:** All competitors under 18 years of age during the event shall complete a Parent/Guardian declaration as part of the entry form which will be emailed to each competitor for their records when entry for the event is complete for the team. During registration competitors may disclose any medical data they feel is relevant to the organisers. This information will be held confidentially and destroyed after the event unless there is a legal reason for its retention.

## 5. FEES

- 5.1 Entry fees; Standard **European** Entry Fee Euro 480 (until 1st June 2026), Late Entry Fee Euro 580 (until 14th June 2026). Standard **non-European** Entry Fee Euro 240 (until 1st June 2026), Late Entry Fee Euro 290 (until 14th June 2026). See Attachment C.

- 5.2 Entries will only be accepted after 14th June 2026 at the discretion of the Class Executive with the payment of the Late Entry Fee.

- 5.3 Coach Event Registration Fee: Euro 120 per person. All registered coaches will have the same rights and access as the participants (including meals and event facilities).

Coaches sharing a coach boat: Euro 70 per person.

- 5.4 Refund of Entry Fees: If a boat withdraws from the World Championships, the entry fee will be refunded as follows;

- Up to 14th June 2026: 50% of the entry fee will be refunded.
- After 14th June 2026: Refunds shall **not** be granted.

- 5.5 Cancellation; if the World Championship is cancelled each competitor or coach shall receive a refund of 75% of the entry fee paid.



## 6. [NP][DP] ADVERTISING

- 6.1 Boats may be required to display advertising chosen and supplied by the Organising Authority and the International 29er Class Association. Boats shall not display advertising from previous events.
- 6.2 The Organising Authority may provide bibs that competitors are required to wear.

## 7. FORMAT OF RACING

The regatta will consist of a Qualifying series and a Final series.

## 8. SCHEDULE

- 8.1 The Championship schedule will be as follows:

Thursday 2nd July	Race Office open	0900 - 1800
	Registration and Inspection	0900 - 1800
Friday 3rd July	Registration and Inspection	0900 - 1800
	Competitors briefing	1800
	Opening Ceremony	1830
Saturday 4th July	Qualifying series races	1100
Sunday 5th July	Qualifying series races	1100
Monday 6th July	Qualifying series races	1100
	Regatta Dinner	1800
Tuesday 7th July	Final series races	1100
Wednesday 8th July	Final series races	1100
Thursday 9th July	Final series races	1000
	Prize Giving & Closing Ceremony	TBC

- 8.2 The championship will comprise up to 18 races. Up to 4 races for each fleet may be sailed on any day without a change to the Sailing Instructions.
- 8.3 On Thursday 9th July there will be no warning signal after 1600.
- 8.4 On each race day, a Coach briefing will be held 2 hours before the scheduled time of the warning signal for that day.

## 9. [DP] MEASUREMENT

- 9.1 Measurement - all competitors shall be required to complete an equipment registration form prior to racing.
- 9.2 A boat's equipment shall pass the "Inspection" prior to the first day of racing, according to the schedule (see NOR 8.1). The timetable for inspections will be published by Monday 29th June.
- 9.3 Only one set of sails, and one forestay, shall be used throughout the event.
- 9.4 Equipment shall only be replaced with the permission of the Technical Committee.
- 9.5 Boats may be inspected at any time.
- 9.6 Neither boats nor support persons shall have non-Class-legal equipment on the venue from the first day of Inspection.

## 10. VENUE

- 10.1 The 2026 29er World Championships will be held at the Olympic Sailing Centre, 24159 Kiel-Schilksee, Germany  
For logistics / shipping / mailing contact: [regatta@kyc.de](mailto:regatta@kyc.de)



10.2 Attachment A shows the approximate location of the racing areas.

## 11. COURSES

Courses will be windward-leeward with a gate at the leeward end of the course. The race target time will be 30 minutes.

## 12. SCORING

12.1 THREE Qualifying races are required to be completed by all fleets to constitute a World Championship.

12.2 FIVE Qualifying races are required to be completed by each fleet to constitute a Qualifying Series. If five races are not completed as scheduled, for all fleets, the Qualifying Series will be extended.

12.3 The Qualifying Series points less discard are carried forward to the Final Series.

12.4 The Sailing Instructions will define the scoring system in full.

## 13. [NP][DP] SUPPORT VESSELS

13.1 All support vessels and designated drivers shall be registered with the Organising Authority and shall comply with local legislation and the 29er Class Support Vessel Regulations. See Attachment B.

13.2 Coaches and support vessels shall register through the event website [www.29erworlds.org](http://www.29erworlds.org) on OurClubAdmin and pay the appropriate registration fee as per NOR 5.3.

13.3 If called upon support vessels shall act as rescue boats.

13.4 Each support person vessel at the event shall be insured with a valid third-party liability insurance with a minimum cover of 2 million EUR (or the equivalent) per incident and valid for the event.

## 14. SAFETY

In the event of an emergency on the water, the meeting point for safety personnel and the dropping off point for safety boats coming from the racing area will be beside the south crane. The Sailing Instructions will provide all details about the procedure and health services.

## 15. INTERNATIONAL JURY

An International Jury will be appointed in accordance with RRS 91(b). Its decisions will be final as provided in RRS 70.3(a).

## 16. ENVIRONMENTAL RESPONSIBILITY

The Basic Principles state: “Participants are encouraged to minimize any adverse environmental impact of the sport of sailing”. It is requested that care be taken to protect the environment during and after the event. Attention is drawn to RRS 47 - TRASH DISPOSAL which states “Competitors and support persons shall not intentionally put trash in the water. This rule applies at all times while afloat.

## 17. PRIZES

Prizes will be awarded in the following categories,

- a. Men’s World Champions 1st to 3rd
- b. Women’s World Champions 1st to 3rd
- c. Mixed World Champions 1st to 3rd
- d. Overall 1st to 10th



- e. Under 17 Champions 1st to 3rd Men, 1st to 3rd Women and 1st to 3rd Mixed (must be born in 2010 or later)
- f. Silver, Bronze, Emerald, Purple and White Fleets 1st to 3rd.
- g. Over 18 overall (helm and crew) 1st
- h. Top 25 Sail Numbers: the top 25 teams shall be awarded the corresponding sail number and recognized at the prize giving ceremony. Sail numbers shall be provided by Ovington Boats.
- i. The Nations Cup shall be awarded to the nation with the best performance at the World Championships.

Other prizes may be awarded at the discretion of the Organising Authority.

## 18. [NP][DP] MEDIA AND MARKETING RIGHTS, CAMERAS AND ELECTRONIC EQUIPMENT

By participation in the event, competitors as well as registered support persons (see NOR 13.1) or other persons legally bound to this Notice of Race shall comply with the 'Event Media and Marketing Rules' by Kieler Yacht-Club e.V., accessible under [<https://www.kyc.de/event-media-marketing-rules>] and presented at registration on-site, and grant the Organizing Authority (namely Kieler Yacht- Club e.V., Kiellinie 70, 24105 Kiel) marketing and media rights in accordance with the 'Event Media and Marketing Rules'.

## 19. RISK STATEMENT

- 19.1 The responsibility for the decision to participate in a race or to continue with it is solely with the Person in Charge (as defined in RRS 46); to that extent the Person in Charge also accepts full responsibility for the crew. The Person in Charge is responsible for the qualification and the correct nautical conduct of the crew as well as for the suitability and the seaworthiness of the registered boat/board.
- 19.2 The responsibility for the decision to provide support to a competitor or to continue with it is solely with the registered support person (see NOR 13.1); to that extent the registered support person also accepts full responsibility for the crew on the support person vessel. The person in charge for the support person vessel is responsible for the qualification and the correct nautical conduct of the crew as well as for the suitability and the seaworthiness of the registered support person vessel.
- 19.3 The Organizing Authority (namely Kieler Yacht- Club e.V., Kiellinie 70, 24105 Kiel), its legal representatives and/or vicarious agents shall be liable for damages, irrespective of the legal basis, only in case of intent or gross negligence or limited to the damage foreseeable and contract-typical at the time of the conclusion of contract - in case of violation of essential contractual obligations. Essential contractual obligations are those obligations which must be fulfilled in order to make the proper execution of the contract (in this case this Notice of Race) initially possible, the violation of which jeopardizes the attainment of the purpose of the contract, and the observance of which the competitor ordinarily relies on. The limitation of liability shall not apply to claims for compensation of damages due to injury to life, body, or health or due to other legally compulsory liability offenses.
- 19.4 The competitor as well as the registered support person (see NOR 13.1) or another person legally bound to this Notice of Race acknowledges that the event is an outdoor event, so that the implementation, course and schedule of the individual events and races can be influenced by the weather conditions. In addition, the Organizing Authority may be bound by the specifications and rules of national and international sports federations regarding the implementation of the events and races. The schedule stated in NOR 8 for events and races held during the event is therefore non-binding.
- 19.5 The Organizing Authority therefore reserves the right, in particular, in cases of force majeure or on grounds of administrative orders or for safety reasons, to make changes in the realization of the events and races of the event, to postpone the events and races of the



event or to cancel the events and races of the event. This does not constitute any liability by the Organizing Authority towards the competitor and/or the registered support person (see NOR 13.1) and/or another person legally bound to this Notice of Race, if the reasons for the changes, postponement or the cancellation do not result from a wilful or grossly negligent behaviour of the Organizing Authority. The unlimited liability in case of the violation of essential contractual obligations or claims for compensation of damages due to injury to life, body, or health or due to other legally compulsory liability offenses in accordance with NOR 19.3 remains unaffected.

- 19.6 World Sailing's effective Racing Rules of Sailing (RRS) and all other rules as defined in RRS Definition 'Rule' in the version that are current at the time of the event are to be complied with and are explicitly recognized.
- 19.7 German law applies with regard to the implementation of this Notice of Race.
- 19.8 Competitors and registered support persons (see NOR 13.1) shall present a signed and completed consent and declaration form at registration. For competitors and/or registered support persons (see NOR 13.1) under 18 years of age these forms shall be signed by the parents or guardians. The forms can be downloaded from the event website.

## 20. INSURANCE

Each participating boat shall be insured with valid third-party liability insurance with a minimum cover of 1.5 million EUR (or the equivalent) per incident and valid for the event, and in the event of an incident with damage, agrees to exchange insurance policy information with the other boat.

## 21. FURTHER INFORMATION

For information on travel and accommodation, including lists of local hotels, holiday rentals, B&B's, campervans, caravans and camping please check the local event website [www.29erworlds.org](http://www.29erworlds.org)

## 22. CHARTER BOATS

For official charter information please see the link below

<https://www.29erworlds.org/logistics/29er-charter-boats/>

### CHARTER RIBs

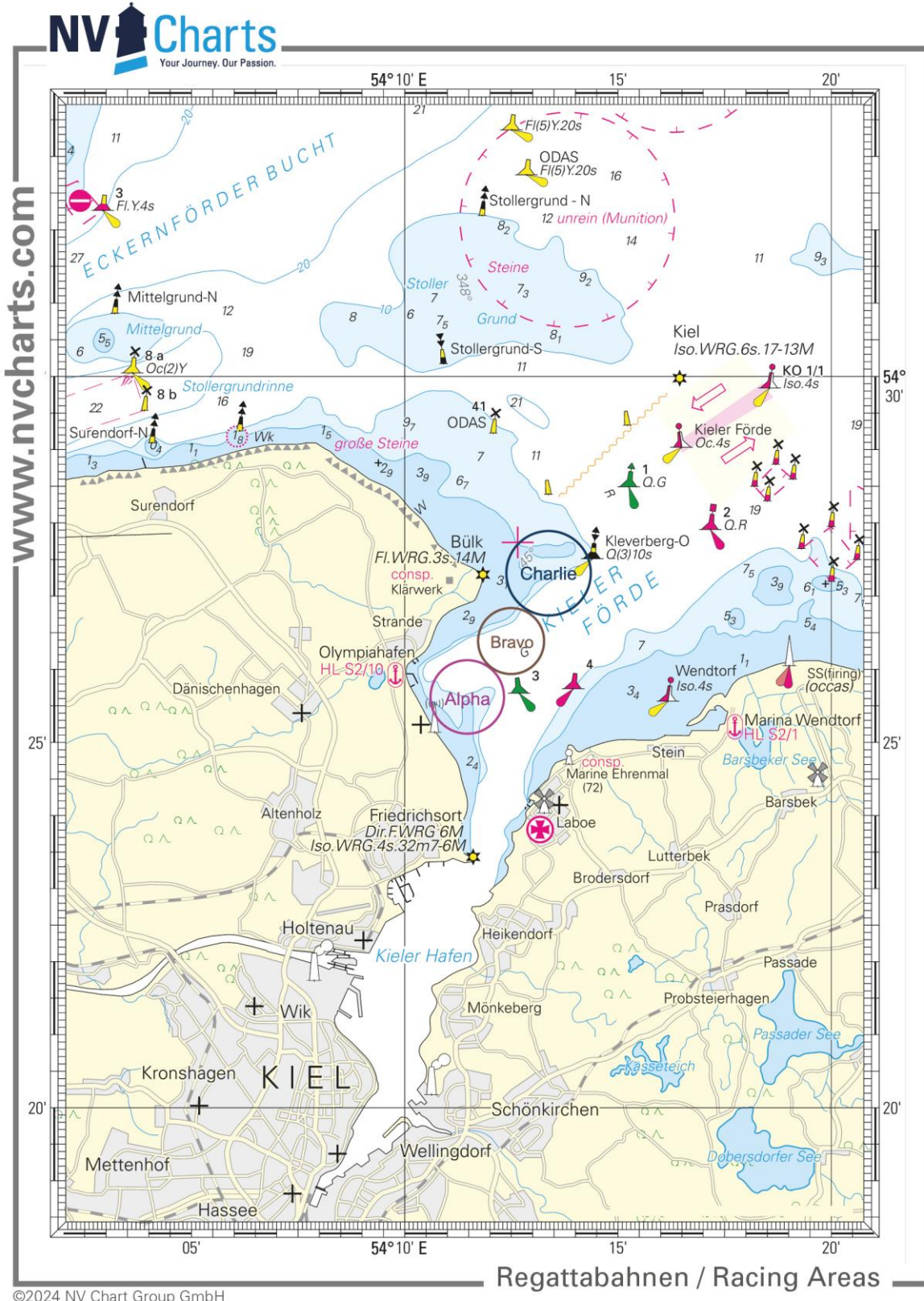
For official charter RIB information please see the official website.

## 23. DATA PROTECTION

The processing of personal data of the competitors and registered support persons (see NOR 13.1) or another person legally bound to this Notice of Race in connection with the event shall be carried out, on the one hand, for the performance of the contractual relationship on the basis of this Notice of Race between the competitor as well as the registered support person and/or another person legally bound to this Notice of Race and the Organizing Authority (led by Kieler Yacht-Club e.V. as data controller) pursuant to Art. 6 (1) S. 1 (b) GDPR. On the other hand, the processing of personal data of the competitor as well as the support person and/or another person legally bound to this Notice of Race is carried out in order to maintain the legitimate interests of the Organizing Authority. The further data protection provisions, including the rights of the competitor as well as the registered support person and/or another person legally bound to this Notice of Race under the GDPR, can be found in the Privacy Policy available at <https://www.kyc.de/en/privacy-policy/>.

# Attachment A

## Course Location



©2024 NV Chart Group GmbH



## Attachment B

### Support Vessel Regulations

# 29er

### *For Kiel Worlds*

1. Support Vessels shall be registered with the Organising Authority and shall be marked with their applicable national sail letters clearly displayed, the minimum height for these letters is 200mm.
2. Support Vessels shall comply with all local regulations.
3. The person registering the support vessel shall confirm that;
  - a. a valid insurance certificate showing proof of third party liability coverage as required by the notice of Race exists.
  - b. each designated driver has a motorboat driving license recognized by a national authority appropriate to the vessel and the shipping waters.
  - c. anyone who will be using a radio has an appropriate radio operation license recognized by a national authority.
4. Support Vessels shall carry the following Equipment on board:
  - i. Personal flotation devices for the driver and all passengers,
  - ii. Engine kill cord (also known as a safety lanyard or automatic engine immobiliser) with a spare kill cord on the support boat
  - iii. VHF radio capable of receiving instruction from Safety or Race Committee
  - iv. First-aid kit
  - v. Device for making a sound signal
  - vi. Compass
  - vii. Adequate anchor and tackle for conditions and depth
  - viii. Tow rope (minimum 15m long and 10mm thick)
  - ix. Knife
  - x. Red-white-striped hazard tape
5. Regulations when afloat
  - a. Support vessel drivers shall use the kill cord shall be worn at all times when the engine is running.
  - b. Support persons and other persons on board support vessels shall personal flotation devices at all times while afloat, except briefly while changing or adjusting clothing or personal equipment.
  - c. Support vessels shall not be positioned, except during rescue operations:
    - i. closer than 100 metres of any boat racing
    - ii. within 100 metres of the starting line and its extensions from the warning signal until all boats have left the starting area
    - iii. within 100 metres of any mark of the course while boats are in the vicinity of that mark

- iv. within 100 metres of the finishing line while boats are finishing.
  - d. In addition, support vessels that are motoring above 5 knots shall remain at least 150 metres from any boat racing.
6. Radio Communication
- a. Support Vessels shall follow Race Committee instructions on the designated VHF channel.
  - b. When in the racing area, the Race Committee will inform Support Persons of its intentions on this channel, and between races Support Persons may request updates of the Race Committee's intentions.
  - c. During racing, Support Persons shall only broadcast safety-related communication on this channel.

David Campbell-James email [campbelljames@btinternet.com](mailto:campbelljames@btinternet.com)  
January 2026

## Attachment C

### European and non-European countries

#### European countries

AUT, BEL, CZE, DEN, ESP, EST, FIN, FRA, GBR, GER, HUN, IRL, ITA, NED, NOR, POL, SLO, SUI, SVK, SWE.

#### Non-European countries

ARG, AUS, BRA, CAN, HKG, IND, ISR, ISV, JPN, OMA, NZL, PUR, RSA, SGP, USA.

